

Brixton Hill, Brixton, SW2

1 bedroom flat for sale

£460,000

Leasehold

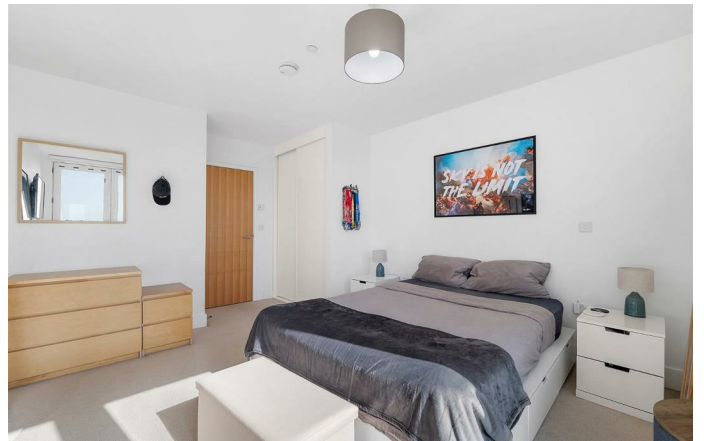
Property Details

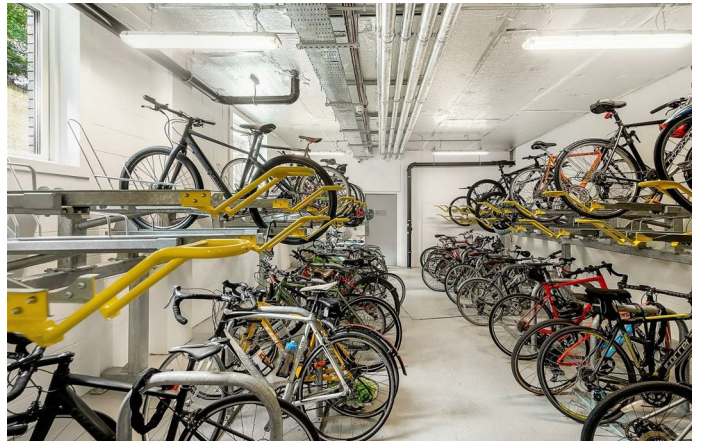
An exceptional one bedroom apartment with a private terrace and three Juliet balconies, on the seventh floor of a sought-after luxury building. The open-plan reception boasts floor-to-ceiling glass and a wonderfully bright ambience. The lounge is the ideal place to unwind in an evening, the contemporary kitchen is fully integrated and neatly arranged, still allowing room for a dining table. Two Juliet balconies allow air to breeze through the room, whilst sliding doors flow to the private terrace. South-facing this low-maintenance terrace is perfect for al-fresco dining or simply drinking in the scenery. The bedroom is generous and bright with full-height glass doors leading to yet another Juliet balcony, a lovely setting for relaxing weekends. The proportions allow for a Super King bed in addition to built-in wardrobes and a desk if desired. The bathroom is spacious with mirrored storage and bathtub with overhead shower. Other selling points include underfloor heating, built-in storage in the entrance and downlighting. The building has lifts, remaining build warranty, bike store, parcels lockers, resident's garden and resident's roof terrace.

Features

- One double bedroom
- Private South-facing terrace plus three Juliet balconies
- Seventh floor views
- Over 580 square feet
- Resident's roof terrace and garden
- Secure bike storage and lift
- Central Brixton, moments from Brixton tube station and Brixton Village
- A short stroll to Brockwell Park
- Chain-free

Council tax band C EPC rating B (84)



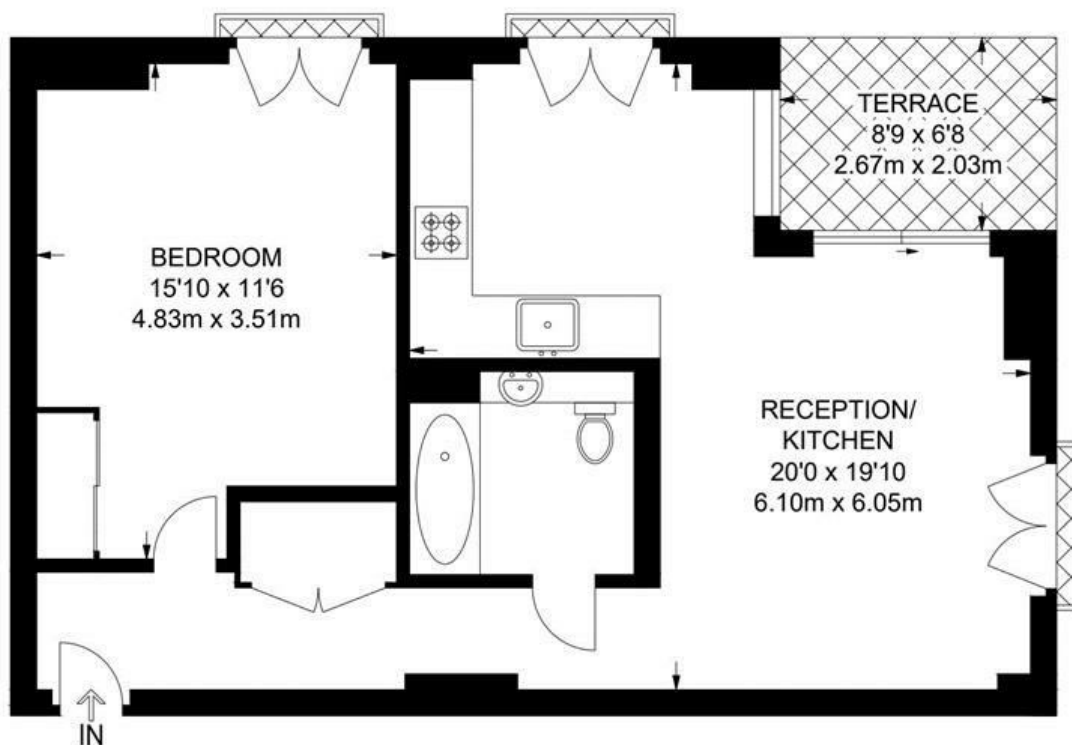


Brixton Hill, Brixton, SW2

Flat 37 Somerset Place, SW2

1 Bedroom Flat

APPROXIMATE GROSS INTERNAL AREA: **581 SQ FT / 54 SQ M**



SEVENTH FLOOR



While we try our very best, floor plans are produced as a guide only and we take no responsibility for the precise accuracy with which any property is represented.

Brixton Hill, Brixton, SW2

